


VacSax + Advance


VACSAX ADVANCE RANGE OF DISPOSABLE SUCTION LINERS INSTRUCTIONS FOR USE FOR ADVANCE LINERS

Connection and use:

Read all instructions thoroughly before attempting to use this equipment, pay special attention to warnings and precautions - these are indicated thus 

Before use check the product has not reached its use by date. This can be found printed on the liner and packaging label.

- 1 Ensure rigid canister is clean – wipe the inner rim surface with a damp cloth if necessary. **Use the correct size canister for your liner!**
- 2 Remove liner from carton, **do not attempt to unfold the liner as they self inflate.**
- 3 Place liner into rigid canister and push firmly. Check patient port is facing forward for ease of connection.
- 4 Push the taper connector on the vacuum tubing from suction controller into the vacuum port with a twisting motion.
- 5 Turn the Suction Controller to maximum and switch on the vacuum; this will inflate the liner ready for use. Once the liner has been inflated set the desired vacuum level using the suction controller.
- 6 Connect the patient tubing firmly to the patient port to ensure a good fit.

 **PRE-USE CHECK:** Confirm that suction is present at the patient tube by manually occluding the patient tube end before proceeding. Visually check that the liner has fully inflated.

AFTER USE:

- **IMPORTANT!** Do not turn off vacuum source while disconnecting patient tubing, if system has been overfilled fluids may pass back down patient tubing!
- Remove patient tubing and fit stopper located on rim into port.
- Remove the vacuum connection and using the handles, lift the liner out of its canister.
- Dispose of vacuum tubing set if it becomes contaminated during use.
- Refer to disposal instructions.

These instructions should be used in conjunction with the instructions supplied with the product.



ISO: 9001 REGISTERED
ISO: 13485 REGISTERED



Conforms to:
93/42/EEC Medical
devices directive



Single use



Important
information

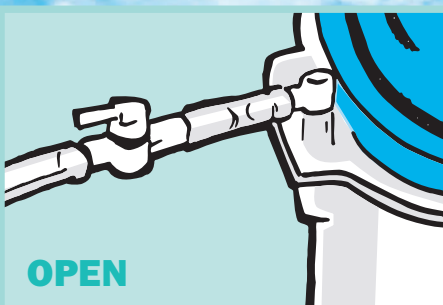
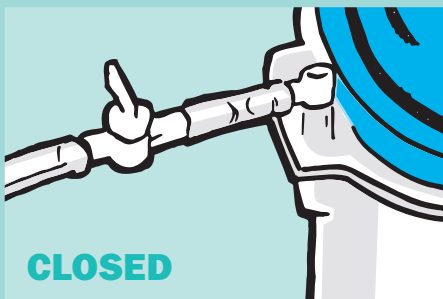
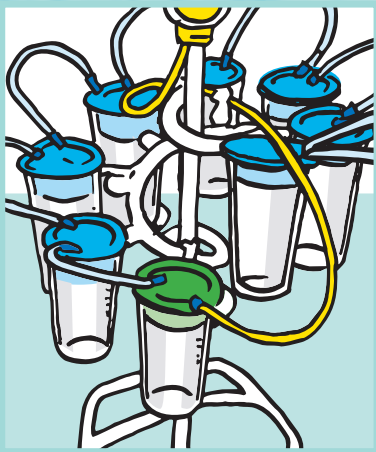
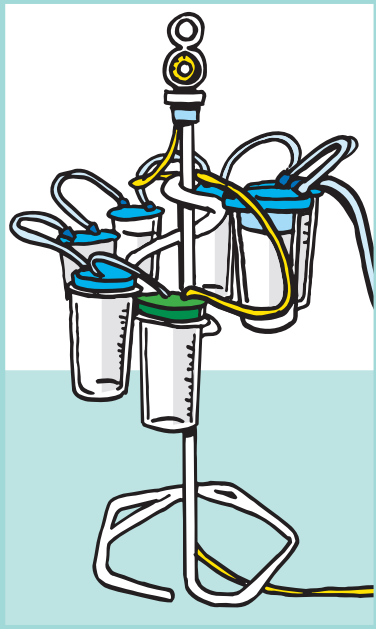


Latex Free




Packaging
100% Recycled
100% Recyclable

VacSax + Advance



INSTRUCTIONS FOR USE FOR ADVANCE CASCADE LINERS
Using a *Spiral* Heavy Duty stand up to eight 2 litre ADVANCE liners may be cascaded giving a total system volume of 16L.


Connection and use:

Read all instructions thoroughly before attempting to use this equipment, pay special attention to warnings and precautions - these are indicated thus 

Before use check the product has not reached its use by date. This can be found printed on the liner and packaging label.

Setting up the ADVANCE cascade liner system

- Ensure you are familiar with the set up of standard Advance
- Starting at the suction source connect the vacuum tubing with the blue taper connector to the vacuum port of the green top liner.
- Using VacSax cascade tubing, connect the patient port of the green top liner to the vacuum port of the first blue liner. Using cascade tubing connect the patient port of the first blue liner to the vacuum port of the second blue liner; continue until the last liner is reached.
- Turn on suction controller and set to maximum vacuum level. Starting at the blue top liner open the canister tap to inflate the liner. Progressively open taps to each canister inflating each in turn.
- Connect your patient tubing to the patient port of the top blue liner.

-  If canister position is not being used leave tap closed.
- Open the tap on the vacuum tubing connected to the green top liner and confirm vacuum is present by manually occluding the patient port of the last blue liner.
- Visually check all liners have fully inflated.

PRE-USE CHECKS:

- Check all liners are firmly pushed down into canisters.
- Check all tubing connectors are push firmly onto patient and vacuum ports.

AFTER USE

- **IMPORTANT!** Do not turn off vacuum source while disconnecting the liner system, if system has been over filled fluids may pass back down patient tubing.
- Starting at the liner with the patient tubing connected; disconnect patient tubing from the patient port. Remove the small patient port stopper from the outer rim of the Liner cap by twisting to snap-off.
- Press the stopper firmly into the patient port.
- Disconnect the cascade tubing from the Liner vacuum port and press the large yellow stopper firmly into the port, switch valve to the off position before removing the liner.
- To remove the liner from canister, use the handles on the side of the liner cap to lift the used liner carefully out of the Canister - dispose of in accordance with hospital policy.
- Repeat until green top liner is reached.
- Disconnect suction tubing from green cap liner. If tubing has been contaminated remove and replace with new tubing. Remove green top Liner from Canister - dispose of in accordance with hospital policy.
- Switch off vacuum at the suction controller.



VacSax Limited, Western Wood Way,
Langage Science Park, Plymouth, PL7 5BG, UK.

T: +44 (0)1752 337000 F: +44 (0)1752 337600

Sheffield Sales Office

Provincial House, Solly Street, Sheffield, S1 4BA, UK.

T: +44 (0)114 2769810 F: +44 (0)114 2769809

